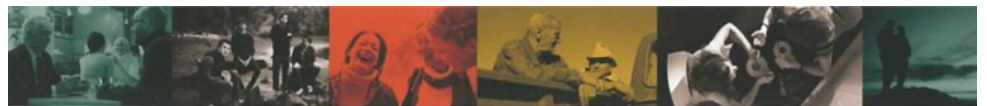




Lunch and Learn *Sunday, July 21, 12 pm*

As pastor Joe has been preaching through the book of Acts we have been challenged to consider our mission of making disciples. Come and hear what we have been doing in the past year at Nall to incorporate disciple-making in an intentional way.

Learn more about why we have been making changes to the way we are approaching group life and how that will continue to move forward in the coming year. This is a great opportunity for anyone to ask questions and find answers to help clarify our strategy for making disciples.



real-life
discipleship

equipping disciples who
make disciples

Register online at
www.nallave.org/events



In this issue:

- Savers Fundraiser... page 2
- Women's Retreat ... page 2
- VBS Recap ... page 3
- Summer of Missions ...page 4

SAVERS FUNDRAISER FOR MOPS/MOMSNEXT

It's time to clean out those closets!! Pack your donations and pop your trunk. We will pick it up from your car trunk (or behind your car) during the services this Sunday July 14 and next Sunday July 21! THANK YOU for supporting Nall's MOPS/MomsNext ministry!

**HELP US RAISE FUNDS
BY DONATING
CLOTHES, SHOES & MORE!**



Our **FUNDrive**
will be held at:
Nall Avenue Baptist Church
and will benefit:
MOPS + MOMSnext

learn more:
**Please drop off your filled
trash bag July 13th - July 21st!
Call or text Cara to schedule
your drop off: 913.575.1937**



we accept:

- CLOTHING
- SHOES
- BEDDING/TOWELS
- ACCESSORIES

FUNDrive
savers value village

What we accept
**All items must be in good,
clean, and sellable condition.**



CLOTHING Men's, women's and children's



SHOES Men's, women's and children's



TEXTILES Towels, sheets, blankets,
pillows, curtains, tablecloths



OTHER ITEMS Hats, mittens, scarves, ties, socks,
purses, wallets, backpacks, bags, CD/DVDs, electrical
items, toys & games, kitchen items, knick-knacks

We cannot accept:
Mattresses, baby gear, appliances, large
furniture, auto parts, building materials,
cleaning products, tires, flammable materials

RENEW WOMEN'S CONFERENCE



September 13-14, 2019
Webster Conference Center, Salina, KS
Cost: \$125 for conference, meals and 1 hotel night
Speaker: Author Donna Vanliere
www.donnavanliere.com
For registration or information
contact Marie Clark, marieclark4455@gmail.com

VBS RECAP



VBS was a wonderful week zooming in and focusing on Jesus. We had 99 children and 9 chose to put their trust in Jesus! We are so grateful to all of the volunteers that served and helped make this week great! Thank you for your support.

The children brought school supplies to stuff backpacks for Mission Adelante. Each small group competed to bring the most supplies. The winning group was 5th and 6th grade and they got to cover their leaders (Luke DeMint and Ava Andersen) in shaving cream and fruit loops.

Thursday, July 11 at 1 pm we will have a backpack packing party to assemble all of the donations. Any left over donations will go to building teacher baskets for the staff at Sante Fe Elementary.

HOME GROUPS CONNECTING BEYOND SUNDAYS



This summer Pilot Groups committed to reach out to people in their community to build intentional relationships for the purpose of discipleship. Many groups held bbqs in parks for the families to connect. Please continue to pray for the disciple-making efforts at Nall.

For those interested in learning more about relational discipleship, please attend the Lunch and Learn on July 21.

UPCOMING EVENTS

Joy Luncheon, July 11

11:30 am, featuring Mark Miller & Lori Andersen presenting worship music. Bring a dish or \$4 contribution. All are welcome

Mission Adelante Packing Party July 11, 1-3 pm

Come join packing backpacks for children in need. No RSVP needed.

Youth at the Royals game, July 17

Students will be enjoying a Royals game together, meet at church 5:15 to carpool.

Savers fundraiser for MOPS/ Moms Next. July 13 - July 21

Donation truck will be available for your unused items.

Lunch & Learn, July 21

12:00 pm. Come hear what has Nall been doing in the past year with relational discipleship?

Home Group Training July 28.

12:00 pm. CLC/Gym

Business Meeting, July 28

5:00 pm, Sanctuary

Men's Breakfast, August 5

6:30 am, All men welcome. Meet for breakfast & fellowship at Santa Fe Cafe, 9946 W. 87th St. Overland Park

Full list of events and activities:

www.nallave.org/events.

SUMMER OF MISSIONS WAS A SUCCESS!

This June teams spent time serving at Mission Southside, City Union Mission and Its Sew Easy. Mission Adelante collection was taken at VBS and backpacks will be packed this Thursday.



YOUTH SUMMER CAMP 2019 AT YMCA IN THE ROCKYS

Our teenagers took time to focus on missions opportunities and serve the local churches in Estes Park, CO.

Please pray that their time at camp makes a lasting impact on them.



About Nall Call

Nall Call is the work of many hands.

Editor/Writer: Loretta Bayless; send requests to loretta@nallave.org

Distribution and special assistance: Loretta Bayless, Neal Williams

Photography this issue: Amy Miller, Kelly Jackson & Gerrie Orr

